



S O H O T E R R A C E , N E W Y O R K

THIS 2,500 SQUARE FOOT ROOF TERRACE IS LOCATED ATOP A FIVE STORY PRE-WAR BUILDING IN THE SOHO NEIGHBORHOOD OF NEW YORK CITY. THE CLIENTS, A YOUNG FAMILY, REQUESTED SPACES FOR DIFFERENT ACTIVITIES: PLAYING, LOUNGING, COOKING AND DINING. THE PLAN ACCOMMODATES THESE USES BY CREATING VARIOUS OUTDOOR ROOMS. THE FOCUS OF THE DESIGN IS A SHADE PAVILION FOR THE COOKING, DINING AND LIVING ROOMS. ROOFED WITH 'LEAVES' OF CEMENT BOARD OVER IPE FRAMING, THIS STRUCTURE IS TOPPED WITH A CLEAR POLYCARBONATE PANEL MOUNTED OVER THE CEMENT BOARD FOR RAINY WEATHER.



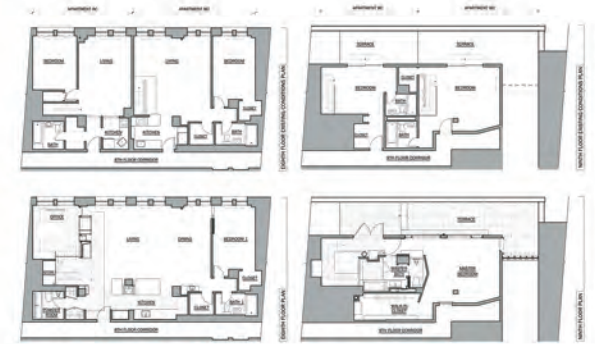
648 BROADWAY SUITE 402 NEW YORK, NEW YORK 10012 T. 212.254.5210 F. 212.254.4523 www.WilkinsonArchitects.com





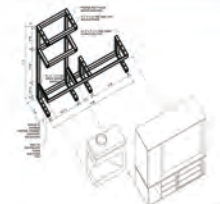
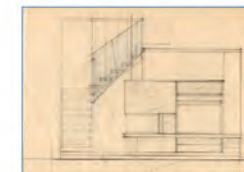
WEST VILLAGE, PENTHOUSE

TWO SMALLER DUPLEX APARTMENTS LOCATED IN NEW YORK CITY WERE COMBINED TO CREATE A NEW 2,700 SQUARE FOOT APARTMENT. THIS COMBINATION REQUIRED A NEW STAIR AND A LARGER OPENING TO THE SECOND LEVEL WHERE THE MASTER BEDROOM AND ROOF TERRACE ARE LOCATED. A NEW SKYLIGHT AND ADDITIONAL TERRACE DOORS AND WINDOWS PROVIDE A GREAT DEAL OF NATURAL LIGHT TO THE STAIRWAY AND ROOMS BELOW.



648 BROADWAY SUITE 402 NEW YORK, NEW YORK 10012 T. 212.254.5210 F. 212.254.4523 www.WilkinsonArchitects.com

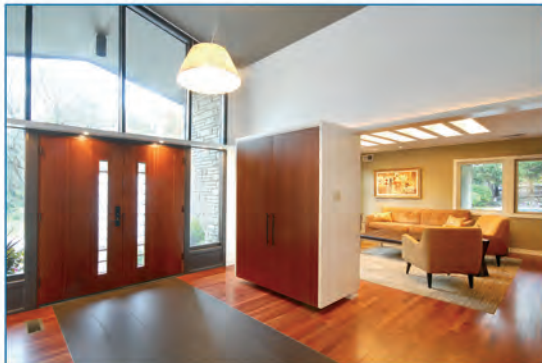
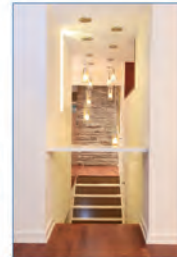
ANDREW
WILKINSON
ARCHITECT





PENN VALLEY, PENNSYLVANIA

THIS EXISTING HOUSE, LOCATED IN A SUBURB OF PHILADELPHIA, REQUIRED AN INTENSE RENOVATION FOR THE NEW OWNERS. THE DESIGN WORK INCLUDED REVISING THE FLOOR PLAN TO ACCOMMODATE A LARGER KITCHEN AND DINING AREAS, IMPROVED FAMILY SPACES AND ALL NEW FINISHES. A FORMERLY ENCLOSED SUNROOM WAS OPENED TO THE EXTERIOR AS AN OUTDOOR COVERED SPACE, WHILE PARTITIONS WERE EDITED TO REFLECT ONLY WHAT WAS NEEDED.



648 BROADWAY SUITE 402 NEW YORK, NEW YORK 10012 T. 212.254.5210 F. 212.254.4523 www.WilkinsonArchitects.com

ANDREW
WILKINSON
ARCHITECT

